

CRITICAL KNOWLEDGE FROM HYDROCORP™ – THE SAFE WATER AUTHORITY™

Cross-Connection Control

Preventing backflow contamination and locating undetected cross-connections to the public water supply is a team effort between building owners and the water purveyor. Informing local water customers and building owners affected by the Cross-Connection Control (CCC) Program is essential for program success and compliance.

The intended audience of these resources is the end user; Water Customer, Occupant, and/or Owner.

SAMPLE Public Awareness Toolkit Includes:

1. Common Definitions.
2. Prewritten Social Media Posts.
3. Graphics & Images for use on Utility Website.
4. Online Video Explaining Cross-Connection Control Program.



Interested In More Content? Need Help with Your Program?

Are you looking for custom web pages, videos, or printable materials?

Get in touch with HydroCorp by visiting our website: hydrocorpinc.com or get in touch with our team directly by filling out the form linked below. Thank you for your interest in **HydroCorp: The Safe Water Authority!**

Contact Us



1. Common Definitions

BACKFLOW. The undesired reversal in the direction of flow of water in a plumbing system, caused by back pressure or back siphonage.

BACK PRESSURE- The backflow of potentially contaminated water into the potable water system because of the downstream side of the piping system pressure is greater than the supply pressure.

BACK SIPHONAGE. - The backflow of potentially contaminated water into the potable water system because of the pressure in the potable water system falling below atmospheric pressure of the plumbing fixtures, pools, tanks or vats connected to the potable water distribution piping.

BACKFLOW PREVENTER - A backflow prevention assembly, a backflow prevention device or other means or method to prevent backflow into the potable water supply.

CROSS-CONNECTION - Any actual or potential connection or arrangement between two otherwise separate piping systems, one containing potable water and the other containing an unknown liquid, steam, gas, solid, or chemical, whereby there exists the possibility for flow from one system to the other, with the direction of flow depending on the pressure differential between the two systems (see "Backflow").

CROSS-CONNECTION CONTROL PROGRAM – A program, or process to identify, control or eliminate cross connections, and prevent cross connections from allowing the backflow of non-potable water into a potable water supply.

NONPOTABLE WATER. Water not safe for drinking, personal or culinary utilization.

POTABLE WATER - Water free from impurities present in amounts sufficient to cause disease or harmful physiological effects and conforming to the bacteriological and chemical quality requirements of the Public Health Service Drinking Water Standards or the regulations of the public health authority having jurisdiction.

WATER SUPPLY SYSTEM - The water service pipe, water distribution pipes, and the necessary connecting pipes, fittings, control valves and all appurtenances in or adjacent to the structure or premises.



2. Prewritten Social Media Posts

Facebook/Social Media Post #1

Your Water Purveyor's Cross-Connection Control Program now includes Residential Water Service Connections. Until recently, this State Mandated Program focused on non-residential (commercial) water service connections and onsite visual inspections to identify potentially harmful interconnections to the Local Public Water Supply.

Image for use:





(Continued) Prewritten Social Media Posts

Facebook/Social Media Post #2

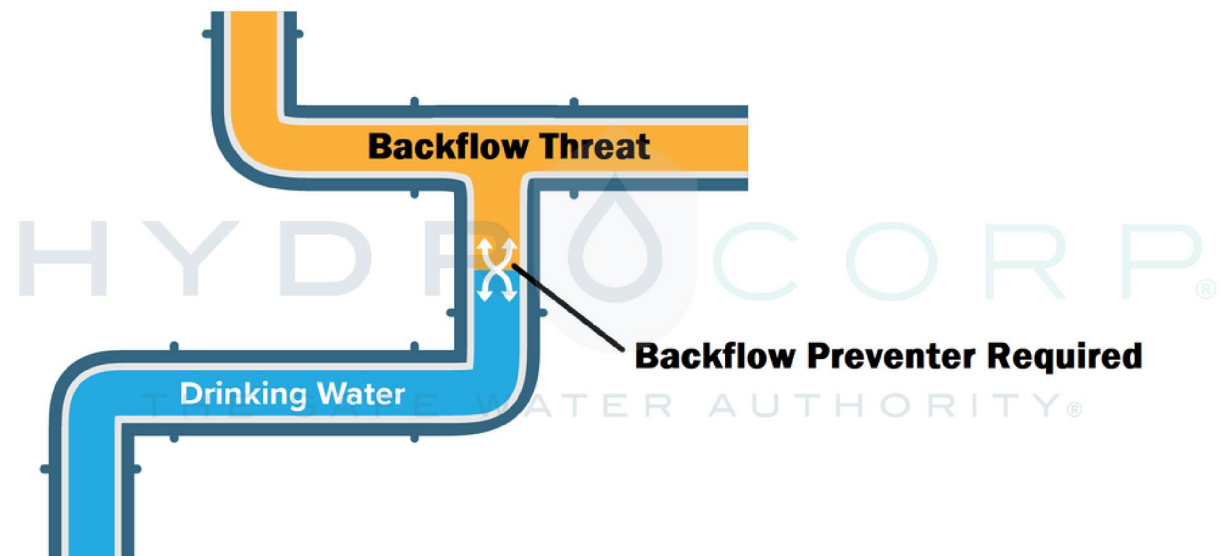
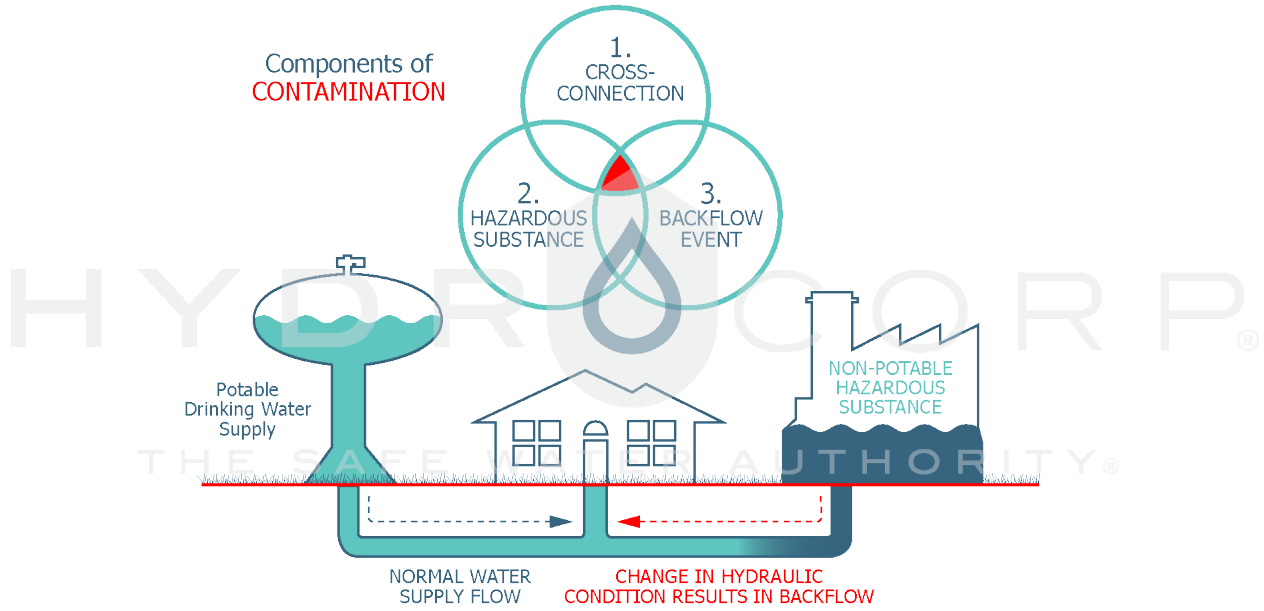
Wow! Did you know the most common contamination to household drinking water plumbing is the garden hose style hose bibb fixture? It is True! A common hose submerged into a bucket or sink of non-potable water or solution can easily contaminate your drinking water if a backflow situation suddenly occurs in the vicinity. Although rare, backflow can occur when a watermain breaks or when a fire hydrant is in use.

Image for use:





3. Graphics & Images for use on Utility Website





4. Online Video Explaining Cross-Connection Control Program.

Use the links below to view the videos explaining two types or aspects of a Cross-Connection Control Program to the affected Water Customers.

- Residential Universal: <https://www.vimeo.com/660943592/c67fae33fd>
- Commercial Universal: <https://www.vimeo.com/676353673/4c52d9ac47>

